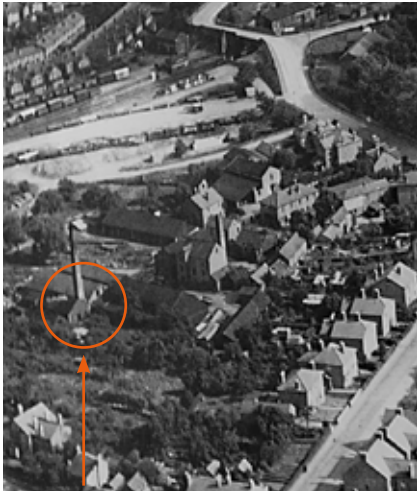


NEWS BULLETIN

PHASE 4 DEVELOPMENT HAS COMMENCED



The original Saw Mill (The underground tank was situated at the foot of the chimney), which was replaced by ...

Standing on the grounds of a previous Saw Mill, Phase 4 will expand the centre by 7 units – all with the option to expand space by installing a mezzanine floor.

Back in 1886, when the Saw Mill was in use, an underground tank was used to store storm water for the stationary steam engine that drove the joinery machinery through shafting.

In 1952, Martin Wilesmith's (owner of both Centres) father replaced the Saw Mill with a new Timber Mill. At the time, he told Martin where the tank was located, and, when surveyors were recently undertaking work on the site, they found it exactly where he said!



... the English Timber Mill, erected in 1952, under which the tank was located ...



... to be replaced with the new Phase 4 development to be completed early 2011.

This Issue's feature... Unit 1

Tulip... spot the difference!

Over the past 12 months, Tulip have gone from strength to strength, gaining several new contracts, including the University of Worcester.

Melanie Baker, Director, commented that if business continues to flourish, they may extend to adjoining units, giving them more room to expand.

With over 80 years of experience, Tulip Cleaning and Laundry Solutions offers a comprehensive range of cleaning and laundry services designed to be flexible and cost effective for all.

For further information: t: 01684 565187, e: enquiries@tulipmalvern.co.uk, www.tulipmalvern.co.uk



Pictured (top – before, bottom – after): Whether a fire or flood clean, crash clean or extreme deep clean up, Tulip have the experience to tackle it all. Cleans of this nature require a specific understanding of the risks and requirements to bring the property back to a habitable state.

Other Unit news in brief

'Shreds of evidence' that recycling can help your fundraising

ShredAbility Ltd (Unit 24) offer a confidential shredding service, after which the shredding is recycled.

ShredAbility are actively involved with local schools. Along with their sister company, ReSource Recycling, they have projects where children involve parents in recycling general waste such as cans, newspapers, cardboard, textiles, etc.

Parents are encouraged to bring their documents and confidential papers to ShredAbility for secure shredding and recycling and a percentage of the fees are returned to the school's funds, a handy fundraiser whilst helping to prevent identity theft!

For further information:

t: 01684 562583

e: enquiries@ShredAbility.co.uk

www.ShredAbility.co.uk

Let the sun make you money!

Worcester Solar Heating (Unit 7c) are specialists in the installation of renewable heating and electricity systems. These include:

- Ground source heat pumps
- Air to water heat pumps
- Air to air heat pumps
- Solar panels
- Underfloor heating
- Photovoltaic (PV) solar panels



Not only does installing a renewable system help save the environment, with the recent introduction of 'Feed in Tariffs' (FIT's) by the Government and the

proposed introduction of 'The Renewable Heating Incentive (RHI)' it now means that customers who take the initiative to generate their own 'green electricity or heat' get paid an annual grant for up to 25 years. This means that the cost of any system can be repaid in initial years leaving many years of tax free income thereafter!

Darren Stockall, Director, commented:

"customers are now seeing renewables as a far better investment than leaving their money in the bank as typical returns of 8 to 10% interest on investment are being achieved! One customer commented, "I am viewing renewables as another pension fund."

For further information:

t: 01684 575892

e: enquiries@worcester-solar.co.uk

www.worcester-solar.co.uk



Chris Pinder, Connectivity UK MD talks through HDMI over IP 2G visually lossless 1080p video distribution solution at CEDIA, London 2010.

better than legacy baluns and better than fixed-frame HDMI matrixes. We have had nearly 100 new account applications since the show finished, including CEDIA Award winning integrators."

Unit 23 tenants – out to impress!

Unique HDTV over IP-network technology impresses AV industry in London

Sister Company to HD Cable Ltd, Unit 23, Connectivity UK impressed the audio/visual industry at Custom Electronic Design and Installation (CEDIA) Expo last June as they showcased their HDMI over IP video matrix along with a side-by-side comparison of the lossless IP video quality next to a direct HDMI cable connection. Stand staff challenged visitors to try and distinguish any differences between IP and HDMI... They couldn't.

Company MD Chris Pinder commented: "The show can only be described as a great success. The stand was constantly busy and the message was getting across to Installers loud and clear. Just Add Power HD over IP is a totally viable HD video distribution option, better than legacy baluns and better than fixed-frame HDMI matrixes. We have had nearly 100 new account applications since the show finished, including CEDIA Award winning integrators."

For further information: t: 0844 357 4455, www.connectivityuk.com.

Directory of occupants

Link Business Centre:

Unit 1

Tulip
Tony & Melanie Baker
01684 577617
www.tulipmalvern.co.uk

Unit 2

First Floor (Malvern) Ltd
Contract Flooring
Russell Simon
01684 211877
www.firstfloormalvern.co.uk

Units 3 & 4

Julian Graves Ltd
Confectionery Processors
0845 602 4816
www.juliangraves.com

Unit 5

Mid West Automation
Aluminium Fabricators
Andy Haigh
01684 899103
www.midwestautomationltd.co.uk

Unit 6

Meigh Mansbridge & Company
Accountants
Roger Meigh, Kevin Mansbridge
01684 565486
www.meigh-mansbridge.co.uk

Unit 7a

Estate Office
Kim Riding, Administrator
01684 561238
www.linkbusinesscentre.co.uk

Unit 7b

Wyvern Homes Ltd
Residential Developers
Mark Wilesmith
01684 561238
www.wyvernhomes.co.uk

Unit 7c

Stockall Electronics Ltd
Kate Stockall
01684 574977
www.stockallelectronics.com

Unit 7c

Worcester Solar Heating Ltd
Installers of renewable energy systems
Darren Stockall
01684 575892
www.worcester-solar.co.uk

Unit 7d

Crown Taxis
Khurshid Baig
01905 357788

Unit 8

Multiple Fixings & Suppliers Ltd
Lee Hackett
01684 892981

Unit 9

Fire Installation Service Ltd
Lee Hackett
01684 892981

Unit 10

Malvern Engineering Ltd
Chris Smedley
01684 574471

Unit 11a

Smart Car Care
Valeting Centre

Unit 11b

S J Prosser & Son
Andrew Prosser
Painter & Decorator
01684 892281

Unit 12

Surplex UK Ltd
Recycling Computer Hardware
Mark Willis
01684 568789
www.surplex.co.uk

Unit 13

Beacon Sports & Trybike
Commercial Embroidery
& Bicycle Sales
Jon Wootten
01684 892439
www.beaconsports.co.uk
www.trybikestore.co.uk

Units 14 & 15

Link Tools
Tools & Fixing Supplies
Steve Metcalfe, Gary Looker
01684 578866

Unit 23

HD Cable Ltd
Electronics Wholesalers
Chris Pinder
0844 351 0190
www.hdcable.co.uk

Unit 24

Shredability Ltd
Secure Shredding
Mark Heason
01684 562583
www.shredability.co.uk

Unit 25

G Webb Automation
Packaging Equipment Manufacturer
Paul Webb MD
01684 892929
www.webbautomation.co.uk

Unit 26

RPM Car Repairs
Katie & Paul Bird
01684 565555
www.rpm-malvern.co.uk

Unit 27

Total Plastic Services
Window Wholesalers
Robin Hudson, Philip Green
01684 575900

Upton Business Centre:

Unit 1

R Davis & M Davis
Wholesale Beds
Bob Davis
Mob: 07748 988888

Units 2 & 3

Central Machinery Ltd
Plant Dealer to the Trade
John Blackmore
01905 340377
www.centralmachinery.co.uk

Units 5a & 5b

Shirescapes
Manufacture of Fencing & Timber Products
Martyn Bishop
01684 592897
www.shirescapes.org.uk/shirescapes

Contact Details for both Centres: Bond House • Howsell Road • Malvern • Worcestershire • WR14 1UQ
t: 01684 561238 • e: enquiries@linkbusinesscentre.co.uk • www.linkbusinesscentre.co.uk

Designed and produced by Full of Bright Ideas
t: 01684 575021 • e: julie@fullofbrightideas.co.uk • www.fullofbrightideas.co.uk