

*“Working together to secure your business”*

## Upton Business Centre enables B R Hodgson to expand their business, and build for the future

Upton Business Centre is providing B R Hodgson Limited with the ideal flexible space required to cater for the expansion of the fabrication side of their business. Having recently taken on an additional Unit, the owners of the Centre made several improvements to the combined area to provide the increased integral space, with improved access, required for the fabrication of the Company’s pre-panelised structural framing solutions, which form easy-to-erect panels, allowing for speed of construction.



*Chris Hopkins at Upton Business Centre, with one of their vehicles loaded with frameworks ready for delivery for student accommodation at Exeter University.*

*“With the help and co-operation of the owners of Upton Business Centre, we are constantly making improvements to the site, which we look upon as an investment in the future of our Company, allowing us to operate a more efficient system for the fabrication*

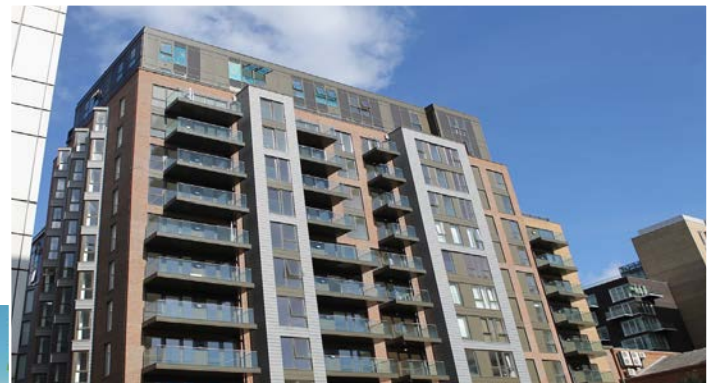
*process – an area of our business that is constantly expanding. Having our own transport operation, combined with the easy access to the M5 from Upton Business Centre, ensures speed of delivery to the various development sites.”* Chris Hopkins, Fabrication Manager

B R Hodgson Limited are currently working on several projects, based in Central London, West Sussex, Plymouth and Exeter, which will keep the site working to full capacity for the next two years. They employ up to 18 staff at the site, depending on the size of the projects they are working on.

B R Hodgson Ltd has a turnover in excess of 20 million pounds. They work on a wide range of commercial projects including hospitals, offices, hotels, residential apartments, refurbishments, schools, Universities, and are experienced in all types of construction.

The Company have achieved a widely acknowledged reputation within the industry since their incorporation. The company maintains core values which encompass reliability, quality and value, and provides professional support in managing their clients expectations.

**For more information: [www.brhodgson.co.uk](http://www.brhodgson.co.uk)**



*Pictured left: Pitville Campus, University of Gloucestershire, Cheltenham. 800 bed student accommodation. The entire structure framework was supplied by B R Hodgson from Upton Business Centre.*

*Pictured above: Bellway Homes, Canary Wharf, London. B R Hodgson supplied the external cladding for this select development of new homes in London Docklands.*



## Sue certainly doesn't allow time to stand still at Link Business Centre!



Sue Shackleton, Director of EasyRead Time Teacher Limited recently gave an inspirational presentation and talk to around 60 attendees, entitled 'Time is of the Essence' at the Malvern Festival of Innovation.

The Festival is the Annual Flagship Event organised by Innovate Malvern CIC, which promotes all aspects of innovation at a grass-roots level. It is an annual event held in various venues in and around Malvern. Their aim is to encourage engineering and technology companies to flourish by interacting with the local community, and drive creativity in business and enterprise through networking activities and local collaboration. This was the sixth edition and attracted speakers and participants from around the UK.

Sue's talk took place at the Coach House Theatre, Malvern. She covered such topics as: *What it's like to start and grow a niche international business. How you can work across time-zones to manage the design, manufacture and delivery of a product. And how e-commerce like eBay and Amazon both help and hinder business growth.* Another occupant of Link Business Centre, The Friday Beer Co, provided the liquid refreshments at the event, serving bottles of their latest ales.

EasyRead Time Teacher Limited is a family business dedicated to helping children and adults overcome the problems encountered when learning to tell the time on analogue clocks. It was started by Sue's brother, Roger Shackleton, who is based in Sydney, Australia. Sue joined him to develop the business in the UK & Europe.

**Sue and Roger's hard work, enthusiasm and faith in their products are an inspiration to any budding entrepreneur. The Company is going from strength to strength – it's turnover has doubled year on year – and Sue is expecting this year's turnover to hit one million pounds.**

EasyRead Time Teacher designs have been so successful that the clocks are now available in Europe, Australasia and North America, from Amazon, eBay and an increasing list of other outlets. **For more information: [www.easyreadtimeteacher.com](http://www.easyreadtimeteacher.com)**

## Morris' Mini Motors – the one-stop-shop for all remote control model enthusiasts

**Morris's business started with a design idea to convert his own hobby engine. Now, Morris's Mini Motors has an increasingly wide range of parts, engines, kits and accessories, shipped all over the world.**

People who purchase from Morris online, already enjoy his impeccable customer service, and now, people have the opportunity to visit his shop at Link Business Centre (Unit 13)



and experience his reputation of going the extra mile to get things right for all his customers. They can view the wide range of remote control model cars, planes and drones available, along with everything else they need, such as fuel, paint, parts etc. There is plenty of parking space and they will receive a warm welcome from owner, and fellow enthusiast, Morris.

**For more information:  
[www.morrisminimotors.com](http://www.morrisminimotors.com)**

**Link Business Centre:****Unit 1****Melton Support Services Ltd**  
*Cleaning Services.*

Contact: Melanie Baker  
Tel: 01684 565187

**Units 2 & 3****Black Pepper (Ledbury) Ltd**  
*Providing quality hot school meals to Gloucestershire, Worcestershire and Herefordshire.*

Contact: David Mabey  
Tel: 01684 891560  
www.blackpepperlunches.com

**Unit 4****The Friday Beer Company Ltd**  
*Producing a variety of bottle conditioned ales for a range of retail outlets.*

Contact: Andrew Keir,  
Perry Jackson, Gerald Williams  
Tel: 01684 572648  
www.thefridaybeer.com

**Units 5 & 22****Mid West Automation Ltd**  
*Build, design and manufacture of machine guards, frames, workstations and flow lines for manufacturers and assemblers.*

Contact: Andy Haigh  
Tel: 01684 899103  
www.midwestautomationltd.co.uk

**Unit 6****Meigh Mansbridge & Co**  
*Accountancy Services to the small and medium sized business, in a friendly, cost effective way.*

Contact: Mike Cushing, Roger Meigh or Kevin Mansbridge  
Tel: 01684 565486  
www.meigh-mansbridge.co.uk

**Unit 7****Stockall Electronics Ltd**  
*Design and manufacture of electronic equipment that monitors welds for the can manufacturing industry.*

Contact: Kate Gee  
Tel: 01684 574977  
www.stockallelectronics.com

**Unit 7A****Estate Office**

Richard Evans, Property Manager and Sue Lane, Administrator  
Tel: 01684 561238  
www.linkbusinesscentre.co.uk

**Unit 7B****Wyvern Homes Ltd**  
*Residential Developers*  
Contact: Mark Wilesmith  
Tel: 01684 561238  
www.wyvernhomes.co.uk**Unit 7C****Worcester Renewable Energy Ltd**  
*Installers of Renewable Energy Systems.*  
Contact: Darren Stockall  
Tel: 01684 892121  
www.worcester-renewable.co.uk**Unit 7D****Crown Taxis**  
Contact: Khurshid Baig  
Tel: 01905 357788**Unit 8****Osbornes of Malvern**  
*Ready Meal Company and Quality Meats.*  
Contact: Colin Osborne  
Tel: 01684 561332  
www.osbornesofmalvern.co.uk**Units 9 & 10****Malvern Engineering Ltd**  
*Supplier of precision CNC machining for all trades, including automotive.*  
Contact: Chris Smedley  
Tel: 01684 574471**Unit 11A****Smart Car Care Valeting Centre**  
*First Class cleaning and valeting service for all types of vehicle (cars, vans, motorhomes, etc).*  
Contact: Patrick  
Tel: 07872 991286**Unit 11B****G Webb Automation Ltd**  
*Supplier of 'high quality' powder filling and container handling equipment to the packaging industry.*  
Contact: Paul Webb MD  
Tel: 01684 892929  
www.webbautomation.co.uk**Unit 13****Morris' Mini Motors**  
*Conversion kits, engine parts, accessories, installation service for remote control models.*  
Contact: Morris James  
Tel: 01684 566566  
www.morrisminimotors.com**Units 14 & 15****Link Tools Ltd**  
*Tools & Fixing Supplies.*  
Contact: Steve Metcalfe,  
Gary Looker  
Tel: 01684 578866  
www.linktoolsltd.com**Unit 16****Signs Central**  
*Creatively designed and manufactured signage to help your business stand out.*  
Contact: Russell and Barbara Amphlett  
Tel: 01684 892011  
www.signscentral.co.uk**Unit 17****Alto Flooring Ltd**  
*Long established quality contract floor layer for Local Authorities, schools, hospitals, etc.*  
Contact: Russell Simon  
Tel: 01684 573222  
www.commercial-flooring-contractor.co.uk**Unit 18****Kitz & Kidz**  
*One stop shop for school uniforms and sports kit.*  
Contact: Lee Smith  
Tel: 01684 892439  
www.kitzuk.co.uk**Unit 19****Kitz UK Ltd**  
*Bespoke printing and embroidery design; corporate and team clothing, sports kits and teamwear. Retail sports equipment outlet.*  
Contact: Jon Wootten  
Tel: 01684 892439  
www.kitzuk.co.uk**Unit 20****EasyRead Time Teacher Ltd**  
*Time teaching systems for children.*  
Contact: Sue Shackleton  
Tel: 01684 566832  
www.easyreadtimeteacher.com**Unit 21****Bouncy Castle Hire Malvern**  
*Suppliers of bouncy castles, inflatable games, rodeo bulls, character mascots, and party food machines.*  
Contact: Gary Kennett  
Tel: 01684 573654  
www.bouncycastlehiremalvern.co.uk**Units 23 & 24****HD Connectivity Ltd**  
*We design, develop & manufacture centralised whole-home HD audiovisual entertainment systems.*  
Contact: Chris Pinder  
Tel: 01684 576348  
www.hdconnectivity.com**Upton Business Centre:****Unit 1A****D-Mac (Alternative Spare Parts) Ltd**  
*Alternative supplier of critical spare parts and consumables for the TRUMPF range of sheet metal machinery.*

Contact: Dave McNally  
Tel: 01684 595646  
www.dmac-asp.eu

**Unit 1B****ZephIR Ltd**  
*Remote Wind Measurement Systems.*  
Contact: Ewan Abbott  
Tel: 01531 651000  
www.zephirlidar.com**Unit 1C****Proptarts**  
*Scenic Arts & Construction.*  
Contact: Ellie Williams & Fabi Thomas  
Tel: 01684 594957  
www.proptarts.org**Unit 2****Forest Traffic Services Ltd**  
*A leading temporary traffic management specialist, delivering high quality service.*  
Contact: Mark Gage  
Tel: 01684 591240  
www.forestsupportservices.co.uk**Units 3 & 5****B. R. Hodgson Ltd**  
*Steel Frame Building Manufacturing.*  
Contact: Matt Ball  
Tel: 0117 9372481  
www.brhodgson.co.uk**Unit 4B****GPD Contracts Ltd**  
*External wall insulation contractors.*  
Contact: Simon Grove  
Tel: 01684 593431  
www.gpdcontracts.com**Unit 9****RAW Technology Ltd**  
*Pollution Response and Remediation.*  
Contact: Simon O'Rourke  
Tel: 01684 578484  
www.raw-group.com

## Andy Haigh, Mid West Automation, 'saw' the potential for a tie-up with another Company – and it's paying off!



Mid West Automation have recently agreed a joint contract with a major Birmingham based manufacturer, associated with the automotive industry. In 2016, this manufacturer had a turn over in excess of £15 million, and in the last financial year, their profit was £1.5 million.

Mid West Automation have been supplying materials to the manufacturer for several years, and have built up an excellent working relationship with them. So when the opportunity of an order arose valued in excess of £100,000.00, consisting of at least 20 tonnes of materials and around six months work, they did not hesitate to approach Andy, and suggest that they joined forces.

Andy has invested £8,000 in a new Semi Automatic Aluminium Cutting Saw, which he is going to loan to the manufacturer to use at their premises. He is then going to arrange for box quantities of aluminium to be delivered direct from Bosch. Once the contract is complete, the saw will be returned to their Unit at Link Business Centre, where it will be used for future production, so it is a fantastic opportunity for Andy and Mid West, which is already extremely busy.

Mid West Automation provide high quality aluminium frame design for many different types of applications.

*"The trend to replace people with robots is on the increase, and will continue to do so. When manufacturers experience the benefits of automation they like the change, and the demand for more increases. These robots all need frameworks to sit in. That's where we come in! We supply customers with these frameworks, along with work benches and assembly frames."* Andy Haigh, Owner.

**For more information: [www.midwestautomationltd.co.uk](http://www.midwestautomationltd.co.uk)**

## LINK & UPTON BUSINESS CENTRES



Father and son, Martin and Mark Wilesmith, working in partnership with Richard Evans, Sue Lane and Geoff Walker, Gatekeeper at Link Business Centre, to provide a professional and friendly home for growing companies to build their own business success.

t: 01684 561238 • e: [info@linkbusinesscentre.co.uk](mailto:info@linkbusinesscentre.co.uk)  
[www.linkbusinesscentre.co.uk](http://www.linkbusinesscentre.co.uk) • [www.uptonbusinesscentre.co.uk](http://www.uptonbusinesscentre.co.uk)  
Bond House • Link Way • Malvern • Worcestershire • WR14 1UQ

Now you can follow Link and Upton Business Centre on 

Newsletter designed and produced by Full of Bright Ideas  
t: 01684 575021 • e: [julie@fullofbrightideas.co.uk](mailto:julie@fullofbrightideas.co.uk) • [www.fullofbrightideas.co.uk](http://www.fullofbrightideas.co.uk)